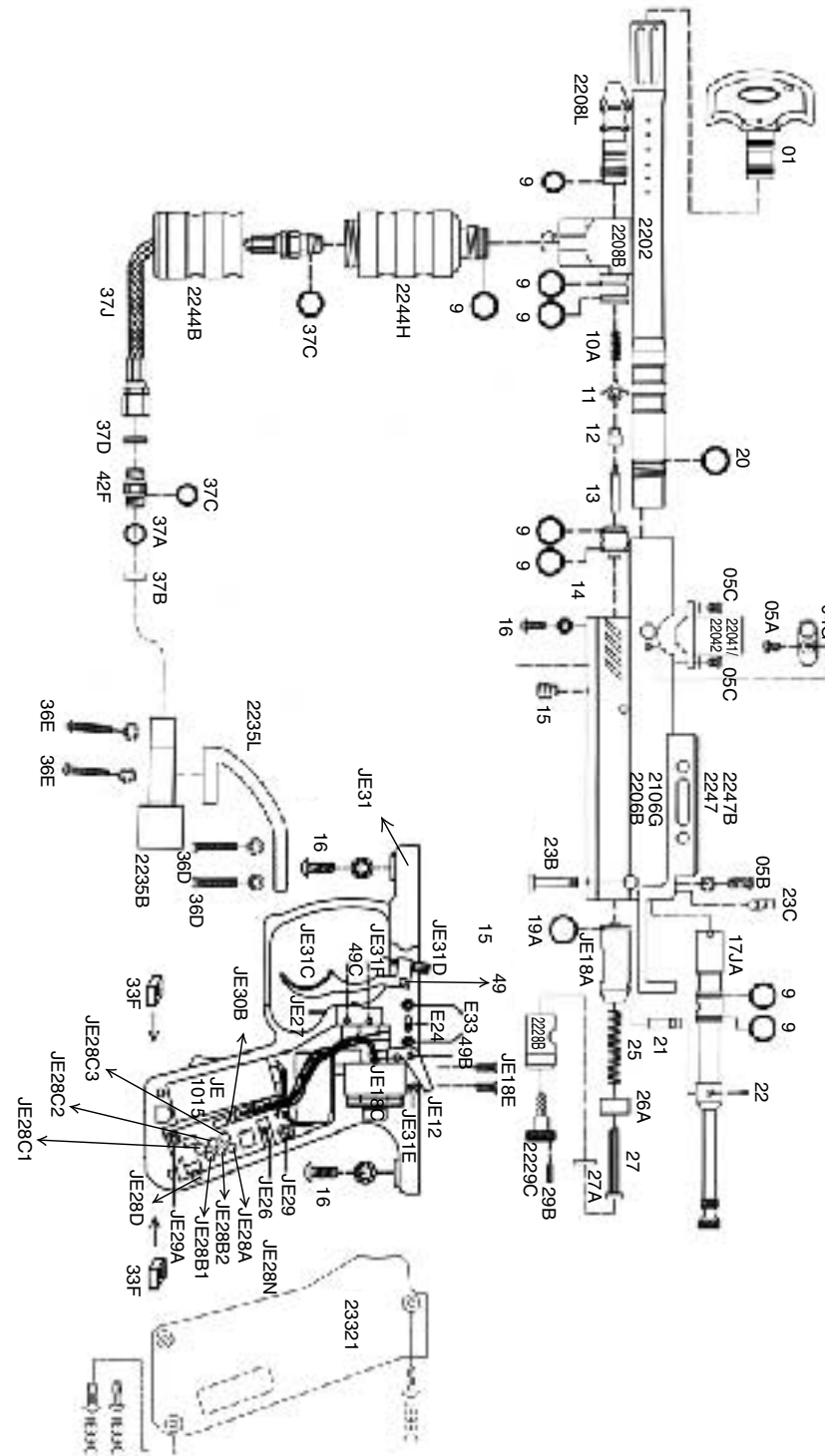


## Spyder E99 Avant (black & green)

ITEM #	NAME OF PARTS	ITEM #	NAME OF PARTS
01	Spyder Barrel Plug	27A	Flat Disc
2202	12" Barrel (Black)	29B	Lock Screw
04GA	Mini Detent Cover (Black)	2229C	Thumb Adjuster w/ Screw (Silver)
05A	M4 x 6 Screw (Black)	23321	E-99 Grip Cover (Black)
05B	M4 x 6 Screw (Silver)	33F	Compact Nut Screw
05C	Direct Feed Screw	36D	5/32" x 5/8" Screw (Black)
07	M5 X 14 Screw w/ Washer	36E	5/32" X 7/8" Screw (Black)
09	O-Ring #015 80D	37A	Filter O-Ring
10A	Valve Spring	37B	Air Filter
11	Cup Seal Guide	37C	Disconnect O-Ring #011 (Black)
12	Cup Seal	37D	Plastic Washer
13	Valve Pin	37J	Disconnect Hose
14	Valve Body	41J	E99 Spare Parts Kit
15	Valve Body Screw	2247	Sight Rail with Beaver Tail (Silver)
16D	M5 x 12 Screw w/ washer	2247B	Sight Rail with Beaver Tail (Black)
17JA	E99 Venturi Cocking Bolt (Black)	49	Sear Roll Pin (Medium)
19A	Striker O-Ring	49B	Secondary Sear Roll Pin
20	Barrel O-Ring (Black)	49C	Touch Switch Roll Pin
21	Bolt Pin	E24	On/Off Switch with Wiring Harnesses
22041	Direct Feed (Green)	E24A	Battery Harness
22042	Direct Feed (Black)	E33	On/Off Screw (M2 x 6 Screw)
2106G	E99 Receiver (Green)	JE1015	Java 9.6v Rechargeable Battery
2206B	E99 Receiver (Black)	JE12	Trigger Sear
2208L	Low Pressure Chamber (Matted Silver)	JE18A	Striker Bolt
2235L	Drop Forward (Matted Silver)	JE18C	Coil Set
2244H	Expansion Chamber (Silver)	JE18E	Coil Set Screw (A)
22	Bolt Screw	JE26	Charge Pin
2208B	Vertical Adapter (Black)	JE28A	Battery Low Indicator
2228B	Striker Plug (Black)	JE28B1	Low R.O.F. Indicator
2235B	C/A Adapter (Black)	JE28B2	High R.O.F. Indicator
2244B	Mini Fore Grip (Black)	JE28C1	Single Shot Indicator
22B	M4 X 8 Screw w/Washer (Black)	JE28C2	3 Round Burst Indicator
23B	Quick Disconnect Pin	JE28C3	Full Auto Indicator
23C	Disconnect Pin Lock	JE28N	IPI 3.0 Circuit Board
25	Striker Spring	JE29	Circuit Board Screw
26A	Striker Buffer	JE33C	Grip Cover Screw (Black)
27	Striker Spring Guide		

P2



P3

## SPYDER E99 Avant Parts List