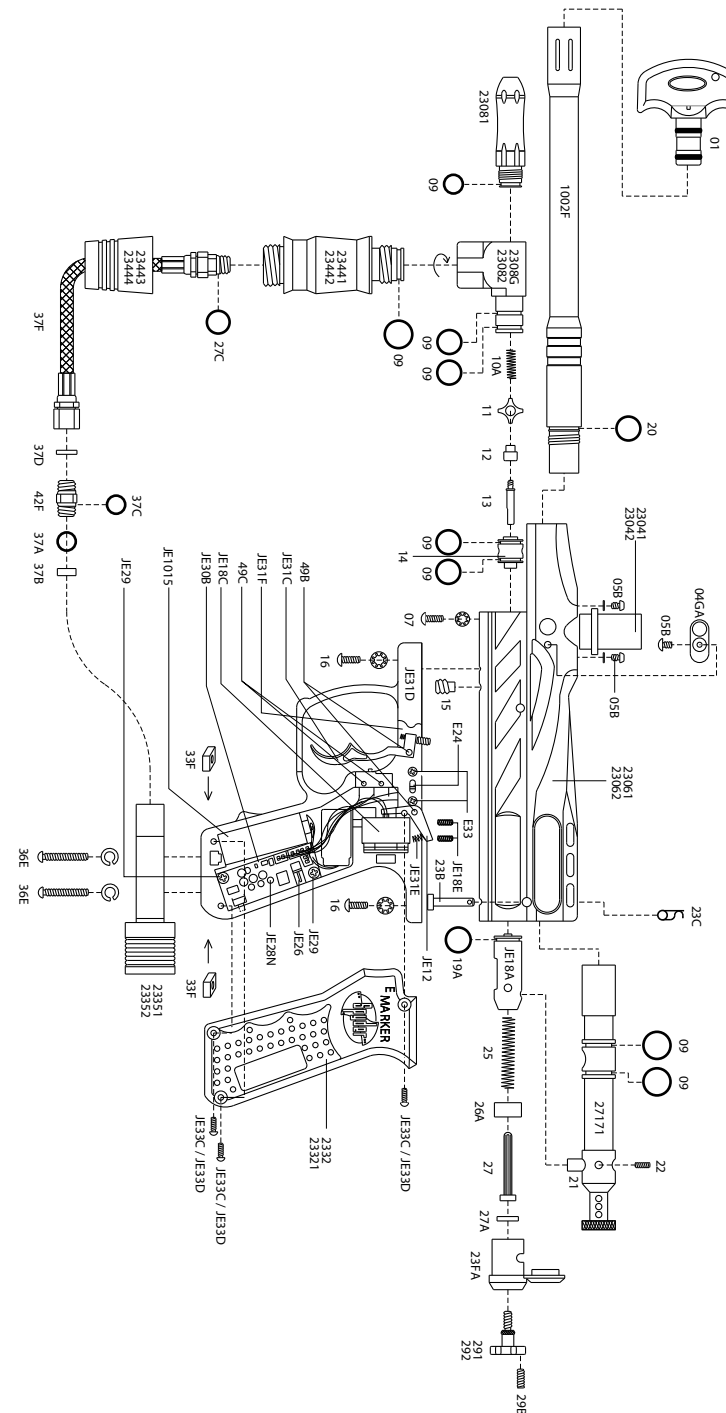


Spyder Imagine (green and grey blue)

ITEM #	NAME OF PART (S)
01	Spyder Barrel Plug
1002F	9 1/2" Barrel (silver)
04GA	Ball Stopper w/ Detent Cover (Black)
05B	Direct Feed Screw (silver)
07	M5 X 14 Screw w/ Washer
09	O-Ring #015 80D
10A	Valve Spring
11	Cup Seal Guide
12	Cup Seal
13	Valve Pin
14	Valve Body
15	Valve Body Screw
16	M5 x 12 Screw
23171	Imagine Venturi Cocking Bolt
19A	Striker O-Ring
20	Barrel O-Ring (Black)
21	Bolt Pin
22	Bolt Screw
23B	Quick Disconnect Pin
23C	Disconnect Pin Lock
23041	Direct Feed (Green)
23042	Direct Feed (Grey Blue)
23061	Imagine Receiver (Green)
23062	Imagine Receiver (Grey Blue)
2308G	Vertical Adapter (Green)
23082	Vertical Adapter (Grey Blue)
23081	Low Pressure Chamber (Silver)
23FA	Striker Plug (Silver)
2332	Rubber Grip Panel (Black)
23321	Rubber Grip Panel (Grey)
23351	C/A Adapter (Green)
23352	C/A Adapter (Grey Blue)
23443	Mini Fore Grip (Green)
23444	Mini Fore Grip (Grey Blue)
23441	Expansion Chamber (Green)
23442	Expansion Chamber (Grey Blue)
25	Striker Spring

ITEM #	NAME OF PART (S)
26A	Striker Buffer
27	Striker Spring Guide
27A	Flat Disc
29B	Lock Screw
291	Thumb Adjuster w/ Screw (Green)
292	Thumb Adjuster w/ Screw (Grey Blue)
33F	Compact Nut Screw
36E	5/32" X 7/8" Screw (Black)
37A	Filter O-Ring
37B	Air Filter
37C	Disconnect O-Ring #011 (Black)
37D	Plastic Washer
37F	Disconnect Hose
41K	Imagine Spare Parts Kit
42F	Male To Male Metric Adapter
49B	Trigger Roll Pin
49C	Touch Switch Roll Pin
E24	On/Off Switch with Wiring Harnesses
E24A	Battery harness
E33	On/Off Screw (M2 x 6 Screw)
E40	Straight Elbow - 2 3/4" (Clear)
JE1015	Java 9.6v Rechargeable Battery
JE12	Trigger Sear
JE18A	Striker Bolt
JE18C	Coil Set
JE18E	Coil Set Screw (A)
JE26	Charge Pin
JE28N	IPI 3.0 Circuit Board
JE29	Circuit Board Screw
JE30B	Tournament Lock Switch
JE31C	Trigger
JE31D	Trigger Adjust Screw
JE31E	Sear Spring
JE31F	Trigger Spring
JE33C	Grip Cover Screw (Black)
JE33D	Grip Cover Screw (Silver)



SPYDER Imagine Parts List