

Brawler

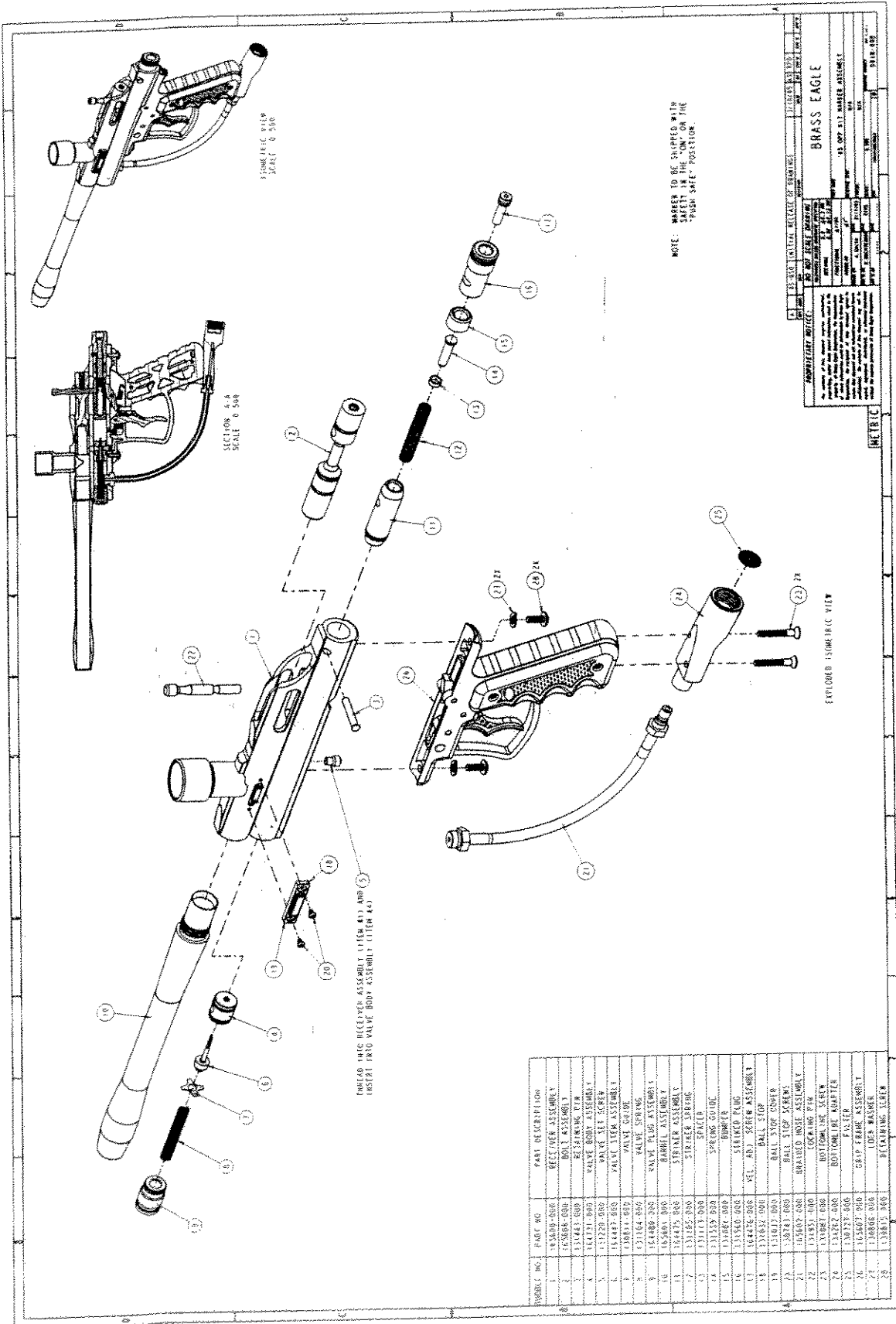
MARKER PARTS LIST

KEY	PART #	DESCRIPTION	DLR
1	165600-000	RECEIVER ASSEMBLY	TBD
2	165608-000	BOLT ASSEMBLY	\$8.00
3	131443-000	RETAINING PIN	\$1.05
4	164731-000	VALVE BODY ASSEMBLY	\$3.00
5	131220-000	VALVE SET SCREW	\$0.35
6	164447-000	VALVE STEM ASSEMBLY	\$1.80
7	130811-000	VALVE GUIDE	\$0.40
8	131104-000	VALVE SPRING	\$0.75
9	164480-000	VALVE PLUG ASSEMBLY	\$1.88
10	165601-000	BARREL ASSEMBLY	TBD
11	164475-000	STRIKER ASSEMBLY	\$6.00
12	131105-000	STRIKER SPRING	\$0.25
13	131113-000	SPACER	\$0.50
14	131559-000	SPRING GUIDE	\$1.00
15	131081-000	BUMPER	\$0.30
16	131560-000	STRIKER PLUG	\$2.00
17	164476-000	VEL. ADJ. SCREW ASSEMBLY	\$1.40
18	131032-000	BALL STOP	\$0.50
19	131033-000	BALL STOP COVER	\$0.25
20	130743-000	BALL STOP SCREWS	\$0.25
21	165602-000	BRAIDED HOSE ASSEMBLY	\$9.00
22	131951-000	COCKING PIN	\$1.50
23	131087-000	BOTTOMLINE SCREW	\$0.50
24	134262-000	BOTTOMLINE ADAPTER	\$8.00
25	130727-000	FILTER	\$0.28
26	165607-000	GRIP FRAME ASSEMBLY	\$38.20
27	130806-000	LOCK WASHER	\$0.25
28	130815-000	RETAINING SCREW	\$0.50

GRIP PARTS LIST

1	130760-000	GRIP FRAME	\$9.20
2	130780-000	DETENT BALL SPRING	\$0.25
3	130781-000	DETENT BALL	\$0.20
4	132052-000	TRIGGER SPRING	\$0.25
5	164647-000	TRIGGER ASSEMBLY	\$4.50
6	131913-000	SAFETY	\$1.50
7	131085-000	TRIGGER PIN	\$0.20
8	131166-000	SEAR PINS	\$1.00
9	130772-000	1/16" STANDARD GROOVE PIN	\$0.40
10	130884-000	O-RING	\$0.50
11	131212-000	SEAR	\$1.50
12	132055-000	SEAR SPRING	\$0.25
13	134412-000	SQUARE NUT	\$0.10
14	130819-000	RIGHT GRIP PANEL	\$1.97
15	131427-000	PANEL SCREW	\$0.50
16	130291-000	SENSOR TAG	
17	130818-000	LEFT GRIP PANEL	\$2.00

Brawler

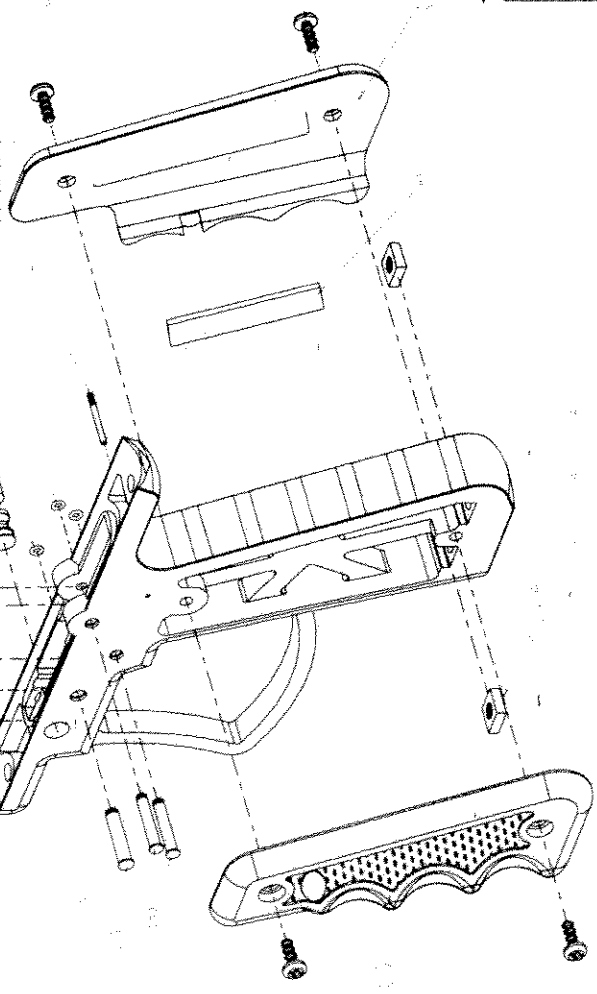
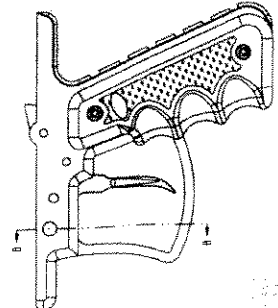
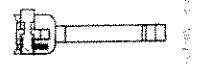
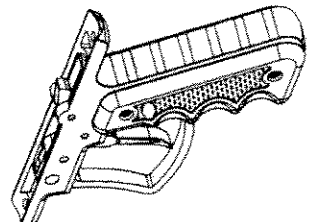
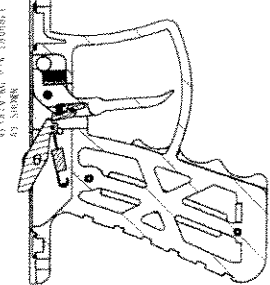


REV	DATE	DESCRIPTION	BY	CHKD
1	10/15/77	ISSUED FOR PRODUCTION
2	11/15/77
3	12/15/77
4	01/15/78
5	02/15/78
6	03/15/78
7	04/15/78
8	05/15/78
9	06/15/78
10	07/15/78
11	08/15/78
12	09/15/78
13	10/15/78
14	11/15/78
15	12/15/78
16	01/15/79
17	02/15/79
18	03/15/79
19	04/15/79
20	05/15/79
21	06/15/79
22	07/15/79
23	08/15/79
24	09/15/79
25	10/15/79
26	11/15/79
27	12/15/79
28	01/15/80

MODEL NO.	PART NO.	PART DESCRIPTION
1	13500-000	RECEIVER ASSEMBLY
2	13500-000	SLIDE ASSEMBLY
3	13743-000	ROCKING PIN
4	13743-000	ROCKING PIN
5	13743-000	ROCKING PIN
6	13743-000	ROCKING PIN
7	13743-000	ROCKING PIN
8	13743-000	ROCKING PIN
9	13743-000	ROCKING PIN
10	13743-000	ROCKING PIN
11	13743-000	ROCKING PIN
12	13743-000	ROCKING PIN
13	13743-000	ROCKING PIN
14	13743-000	ROCKING PIN
15	13743-000	ROCKING PIN
16	13743-000	ROCKING PIN
17	13743-000	ROCKING PIN
18	13743-000	ROCKING PIN
19	13743-000	ROCKING PIN
20	13743-000	ROCKING PIN
21	13743-000	ROCKING PIN
22	13743-000	ROCKING PIN
23	13743-000	ROCKING PIN
24	13743-000	ROCKING PIN
25	13743-000	ROCKING PIN
26	13743-000	ROCKING PIN
27	13743-000	ROCKING PIN
28	13743-000	ROCKING PIN

METRIC

SECRET MAP MARKING CHARACTERS
GROUP 1, CLASSIFICATION
EXCLUDED FROM AUTOMATIC
DOWNGRADING AND
DECLASSIFICATION



1. THE BRASS EAGLE IS A .45 S&W CALIBER, SINGLE ACTION, SEMI-AUTOMATIC HANDGUN.
2. THE BRASS EAGLE IS DESIGNED FOR ACCURACY, RELIABILITY AND DURABILITY.
3. THE BRASS EAGLE IS AVAILABLE IN TWO MODELS, A AND B.
4. MODEL A IS A 5 SHOT, 2 1/2 IN. SLIDE, 4 1/2 IN. BARREL, 8 3/4 IN. OAL, 12 OZ. WEIGHT.
5. MODEL B IS A 6 SHOT, 3 1/2 IN. SLIDE, 4 1/2 IN. BARREL, 10 1/2 IN. OAL, 14 OZ. WEIGHT.
6. THE BRASS EAGLE IS AVAILABLE IN TWO FINISHES, A AND B.
7. MODEL A IS AVAILABLE IN BLACK AND BRASS FINISHES.
8. MODEL B IS AVAILABLE IN BLACK, BRASS AND POLISHED BRASS FINISHES.
9. THE BRASS EAGLE IS AVAILABLE IN TWO GRIPS, A AND B.
10. MODEL A IS AVAILABLE IN A POLYMER GIP AND A GIP WITH A SKIN GRIP.
11. MODEL B IS AVAILABLE IN A POLYMER GIP AND A GIP WITH A SKIN GRIP.
12. THE BRASS EAGLE IS AVAILABLE IN TWO TRIGGER GUARDS, A AND B.
13. MODEL A IS AVAILABLE IN A POLYMER TRIGGER GUARD AND A TRIGGER GUARD WITH A SKIN GRIP.
14. MODEL B IS AVAILABLE IN A POLYMER TRIGGER GUARD AND A TRIGGER GUARD WITH A SKIN GRIP.
15. THE BRASS EAGLE IS AVAILABLE IN TWO SLIDES, A AND B.
16. MODEL A IS AVAILABLE IN A POLYMER SLIDE AND A SLIDE WITH A SKIN GRIP.
17. MODEL B IS AVAILABLE IN A POLYMER SLIDE AND A SLIDE WITH A SKIN GRIP.
18. THE BRASS EAGLE IS AVAILABLE IN TWO BARRELS, A AND B.
19. MODEL A IS AVAILABLE IN A POLYMER BARREL AND A BARREL WITH A SKIN GRIP.
20. MODEL B IS AVAILABLE IN A POLYMER BARREL AND A BARREL WITH A SKIN GRIP.

DESCRIPTION OF WORK PERFORMED		DATE	BY
DESIGN		11/20/71	W. B. ...
DRAWING		11/20/71	W. B. ...
CHECKED			
APPROVED			
PARTS LIST			
DRAWING NUMBER			
PROJECT NUMBER			
DESIGNER			
DRAWER			
CHECKER			
APPROVER			

BRASS EAGLE

GROUP ASSEMBLY C-10113

1/28/71

10/15/71